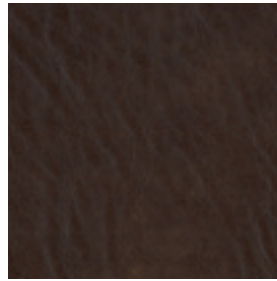




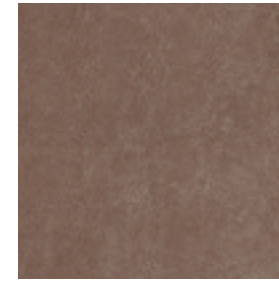
brandy



brazil



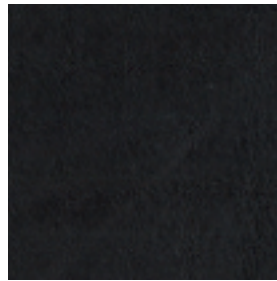
lava



muskat



natur



schwarz

sigmet[®]
bewegende Formen

Rancho

Leather Category IV

Rancho is a drum-dyed thick cowhide leather from European bulls and is 1.4 - 1.6 mm thick. After the classic chrome tanning process, the leather is vegetable tanned to give it its firm and fine structure. The natural skin surface with all its irregularities remains completely visible. Rancho has a silky surface thanks to hand sanding with very fine sandpaper. Additional waxes are used to create a look that resembles that of much-used leather accessories or traditional costume clothing. The natural ageing process has been visually anticipated. Rancho is fully breathable and skin-friendly. Due to the open skin structure, the material is more susceptible to soiling. The leather absorbs liquids quickly. The irregular surface means that most dirt quickly becomes part of the living surface. A leather made for lovers of a natural, robust material that makes every piece of furniture unique.